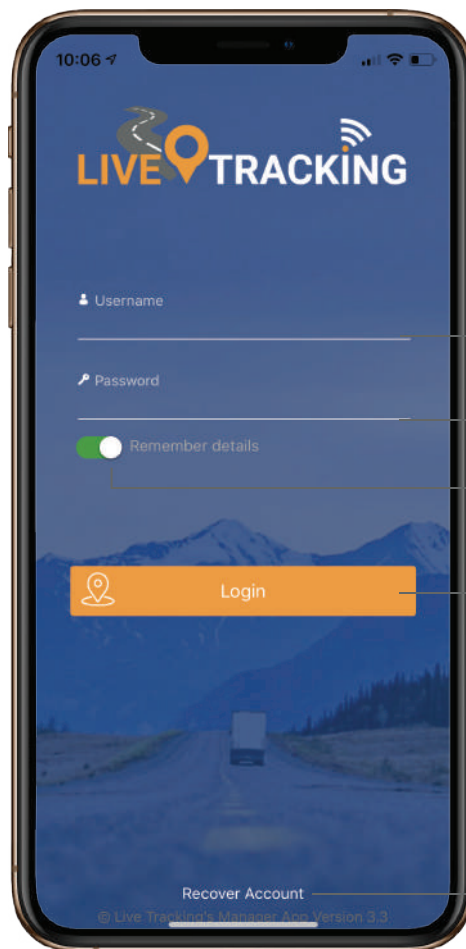


Manager App Guide

For Android and IOS
mobile devices.

Login



Enter your username

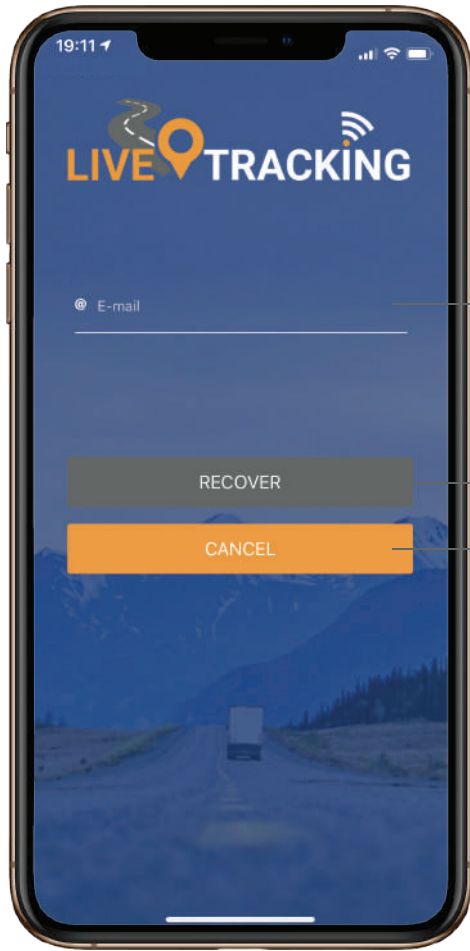
Enter your password

Remember login
details

Click to login

Account recovery

Recover password

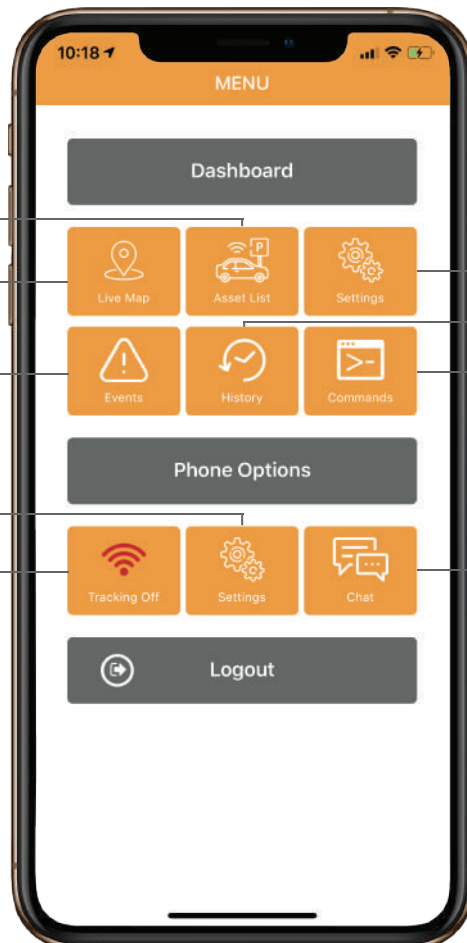


Enter email address

Click to send new password to your registered email address

Return to login screen

Dashboard



Device management

View your objects on the map

View events

Mobile tracking settings

Enables / disables device tracking

Dashboard

Live Map

Asset List

Settings

Events

History

Commands

Phone Options

Tracking Off

Settings

Chat

Logout

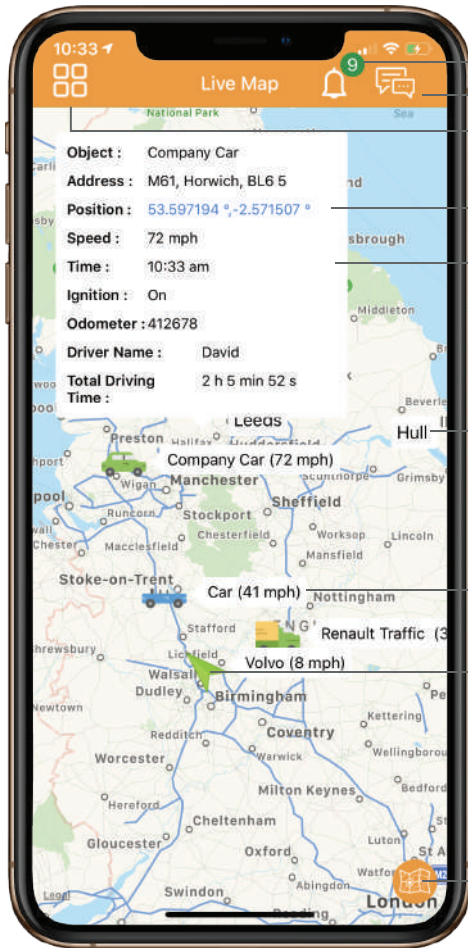
App settings

History

Send SMS / GPRS commands

Messaging system

Live map



Event notifications
Messages
Menu

Links to google maps

Vehicle information pop up

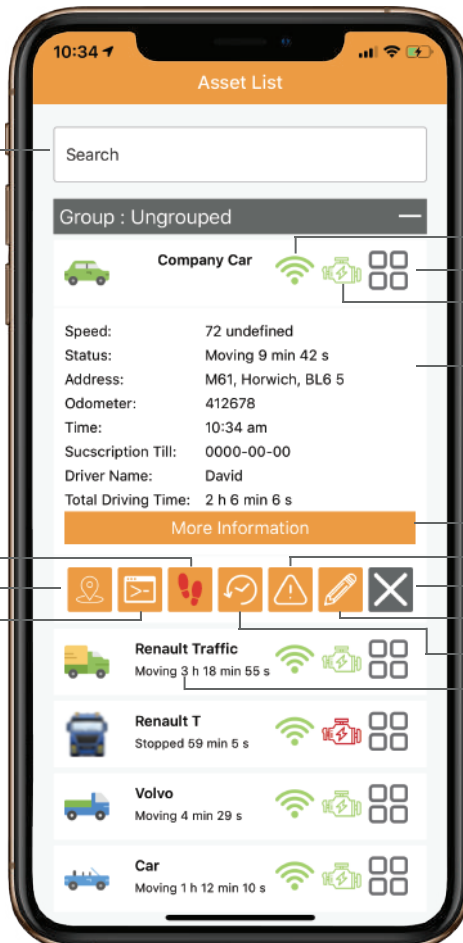
Geozone

Asset name and speed information

Arrow meanings
Green = Moving
Yellow = Idle
Red = Stop
Grey = Offline

Change map layer

Object list



Asset search

Signal status

Menu icon

Ignition status

Asset information

Follow / unfollow

View on map

Send commands

View all asset information

Asset Events list

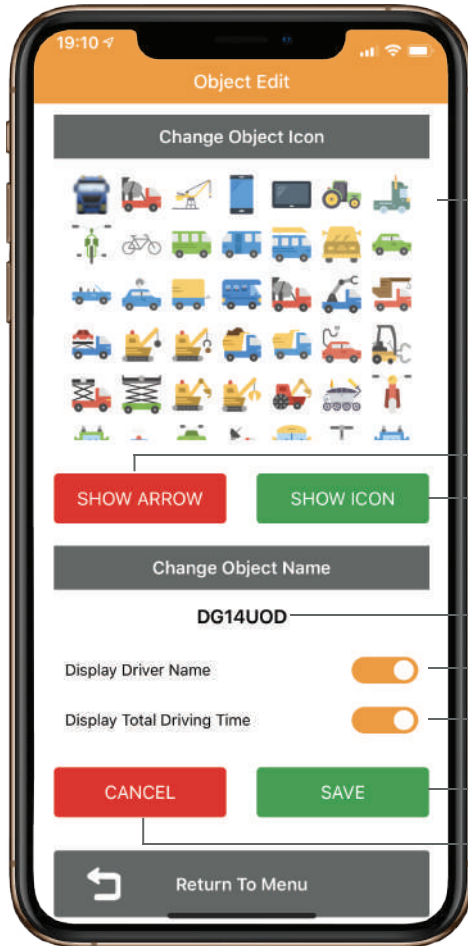
Close menu

Edit information & Icons

View history

Device status

Edit object



Change object icon

Show object as arrow

Show object as icon

Change object name

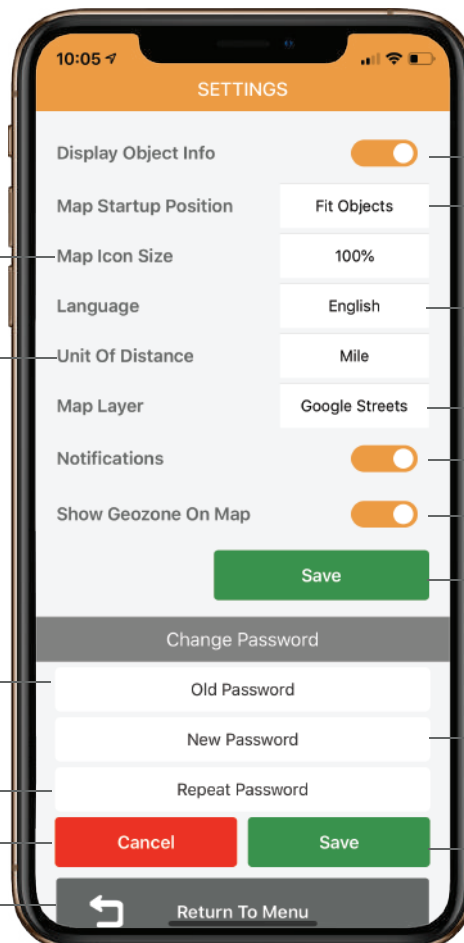
Display driver name on object pop up

Display total driving time on object pop up

Save changes

Cancel changes

Settings



Enable / disable asset info on map

Live map start up position options

Change icon size

Change app language

Select mile or kilometer

Change maps

Enable / disable event notifications

Enable / disable geozone display

Save changes

Enter current password

Enter new password

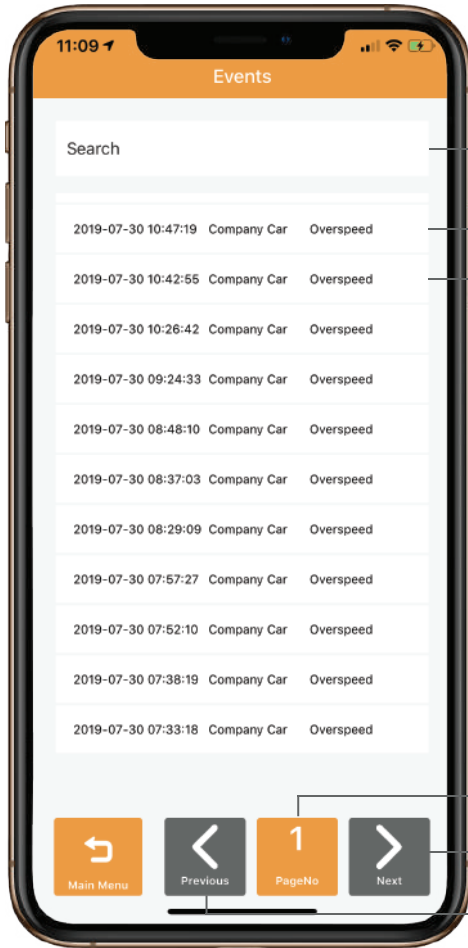
Repeat new password

Cancel changes

Save changes

Scroll down to return to menu

Events list



Search events

List of events

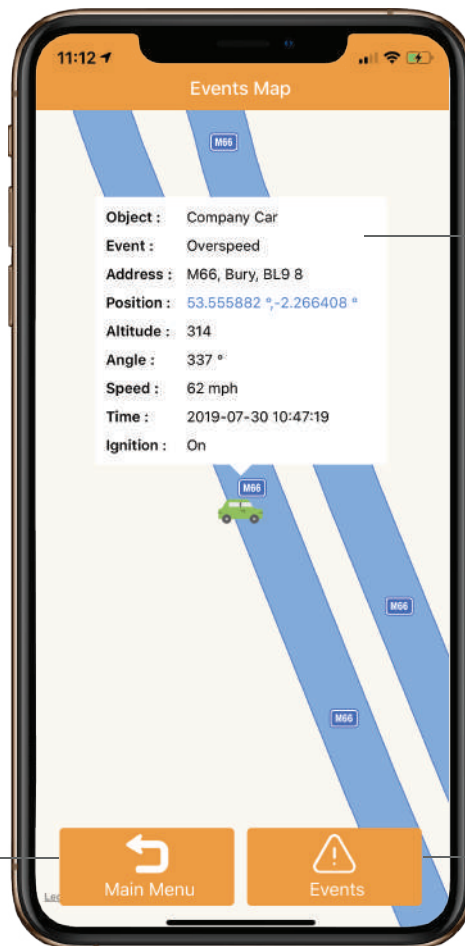
Click on an event to show event on map

Page number

Next page

Previous page

Events map

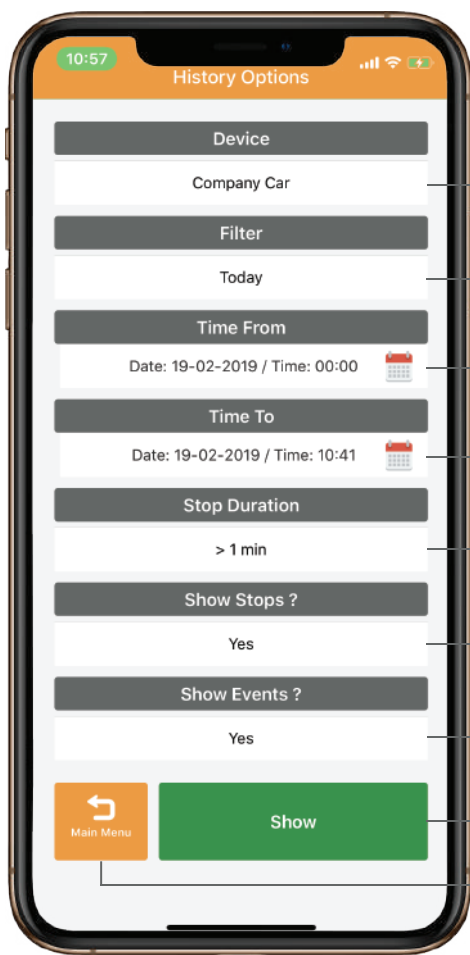


Event map displays pop up with event details.

Main menu

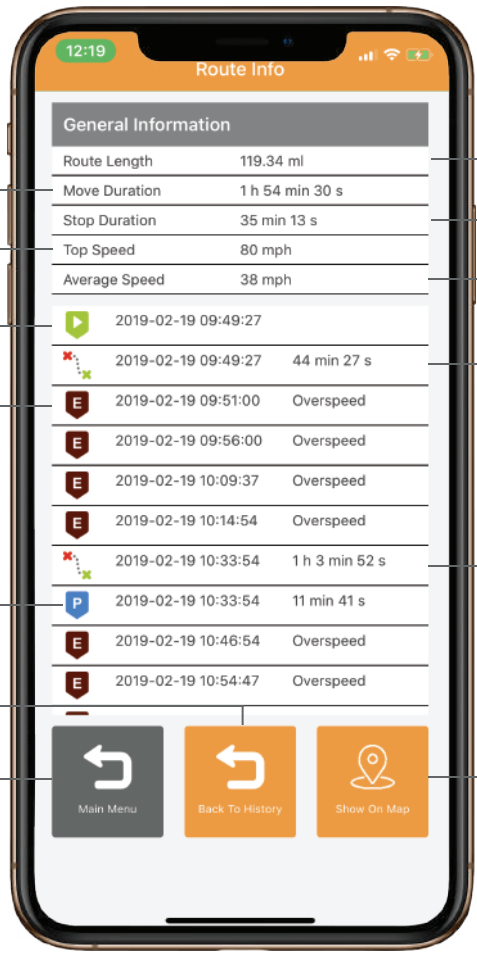
Back to events list

History options



- Select object
- Choose from pre defined options
- Or select date and time from
- Select date and time to
- Choose minimum stop durations to display
- Show / hide stops
- Show / hide events
- Show (displays history on map)
- Show / hide stops

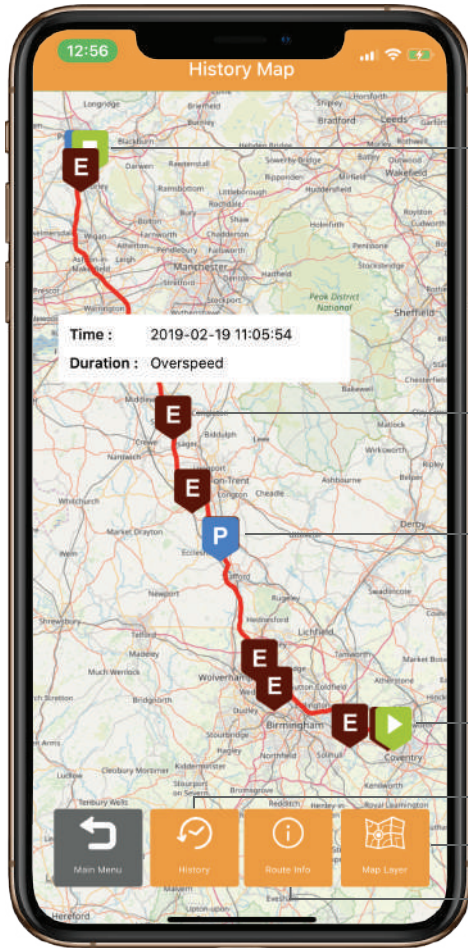
Route info



- Displays time taken to complete route
- Displays top speed
- Route start time
- Displays events type
- Stop duration
- Back to history menu
- Main menu

- Displays route length
- Displays any stop time durations
- Displays average speed
- Route start time and duration to stop time
- Next route start time after stop and duration
- Display above route information on map

History map



Route end

Event
(click to display event information)

Stop
(click to display pop up information)

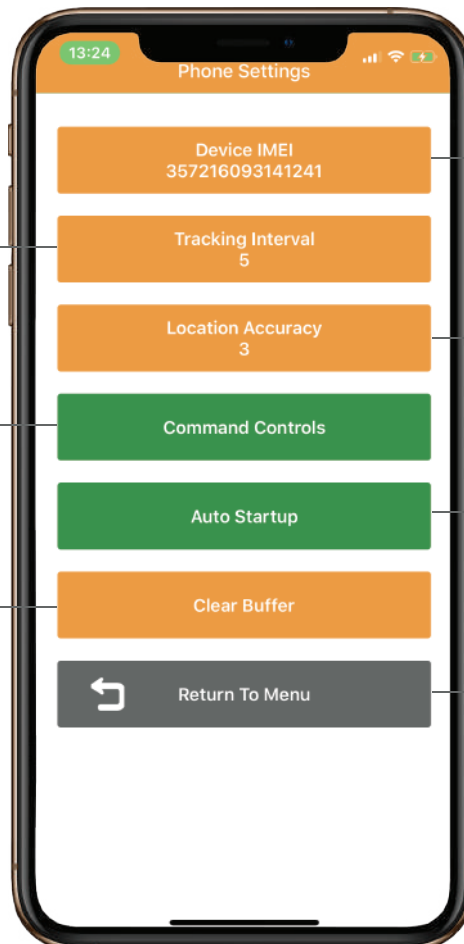
Route start

Back to history menu

Change map layer

Back to route information

Phone settings



Device IMEI Number
(Enter your devices IMEI number)

Set tracking intervals in seconds

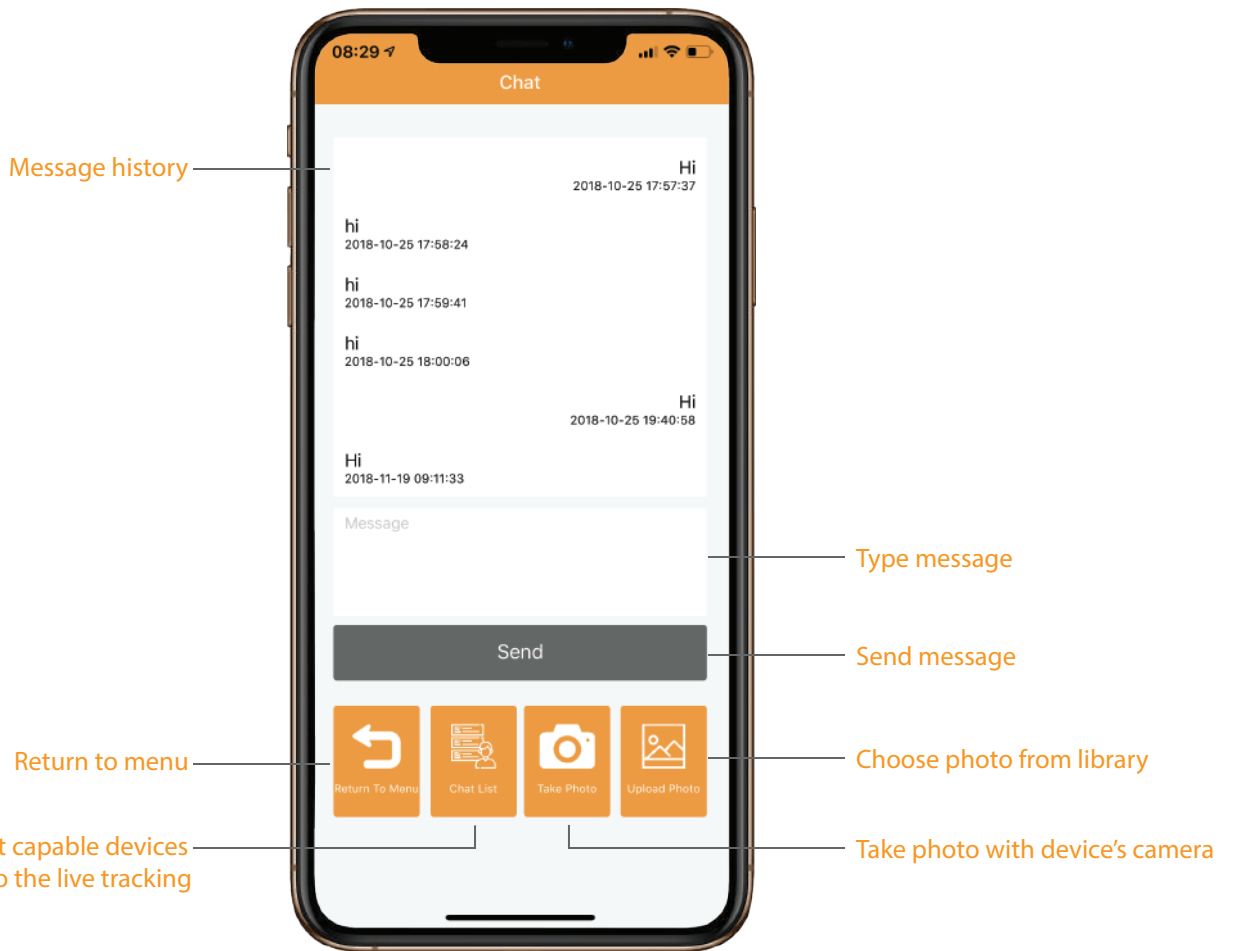
Change location accuracy in meters (lower more accurate)

Allow commands from platform

Auto startup live tracking app after restart of your device

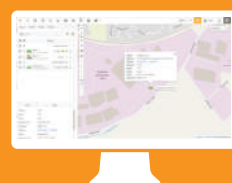
Clears stored memory by live tracking

Return to main menu

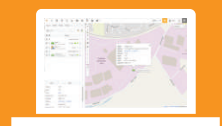


Monitor your vehicles and assets on the go with the LT Manager App.

View your devices in real time with real time notifications



PC



Laptop



App